

O‘zbekiston Respublikasi
Maktabgacha va maktab ta’limi vazirligi
2024-2025 o‘quv yili
I-chorak
choraklik summativ baholash
test savollari.

9-sinf
2-variant

1-20 matematika, 21-35 ingliz tili, 36-50 fizika
(B-bilish; Q-qo‘llash; M-mulohaza ga oid test savollari)

O‘quvchi

(F.I.SH).....

1. (B 1 ball) Parabola uchining koordinatalarini toping.

$$y = x^2 - 4x$$

A) (-2; 4) B) (2; -4) C) (-2; -4) D) (2; 4)

2. (B 1 ball) Kvadrat tengsizlikni yeching:

$$x^2 - 16 < 0$$

A) (-4; 4) B) (-2; 4) C) (-4; 2) D) (-2; 2)

3. (B 1 ball) Kvadrat tengsizlikni yeching:

$$\frac{x + 2}{x - 5} \geq 0$$

A) $(-\infty; -2) \cup [5; \infty)$ B) $(-\infty; -5) \cup (2; \infty)$

C) $(-\infty; -5] \cup [2; \infty)$ D) $(-\infty; -2] \cup (5; \infty)$

4. (Q 4 ball) Agar parabolaning (1; 1) nuqta orqali o‘tishi va uning uchi (2; 2) nuqtada bo‘lishi ma’lum bo‘lsa, parabolaning tenglamasini toping.

A) $y = -x^2 + 2x - 2$ B) $y = x^2 - 4x - 2$

C) $y = -x^2 + 4x - 2$ D) $y = x^2 + 4x + 2$

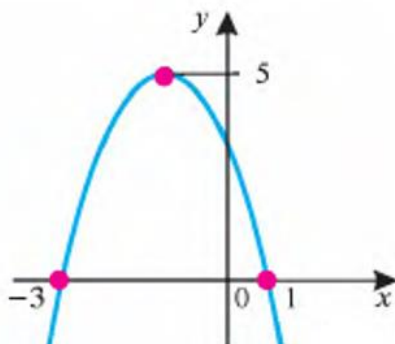
5. (Q 4 ball) $y = ax^2 + bx + c$ kvadrat funksiya grafigi parabolaning tarmoqlari pastga yo‘nalgan, uning uchining absissasi musbat, ordinatasi esa manfiy bo‘lsa, a , b va c koeffitsiyentlarning ishorasi uchun keltirilgan to‘g‘ri moslikni toping.

I. a ning ishorasi	A. musbat
II. b ning ishorasi	B. manfiy
III. c ning ishorasi	

A) I-A; II-A; III-B B) I-B; II-B; III-A

C) I-B; II-A; III-B D) I-B; II-B; III-B

6. (Q 4 ball) Kvadrat funktsiyaning grafigi rasmda tasvirlangan.

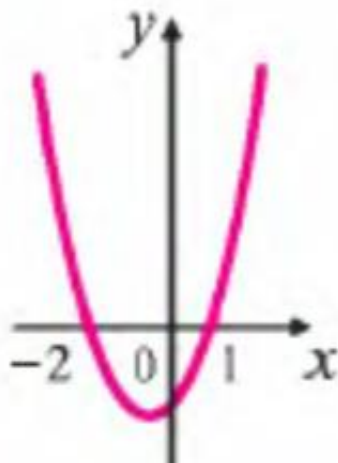


Bu kvadrat funktsiya uchun quyidagi tasdiqlarning to'g'ri yoki noto'g'ri ekanligini aniqlang.

No	Tasdiqlar	to'g'ri	noto'g'ri
1	Bu kvadrat funktsiyaning eng katta qiymati 5 ga teng		
2	Bu kvadrat funktsiyaning $x = 0$ dagi qiymati 1 ga teng		
3	Bu parabola uchining ordinatasi manfiy son bo'ladi		

- A) noto'g'ri, to'g'ri, to'g'ri;
 B) to'g'ri, noto'g'ri, noto'g'ri;
 C) to'g'ri, noto'g'ri, to'g'ri;
 D) to'g'ri, to'g'ri, noto'g'ri;

7. (Q 4 ball) $y = ax^2 + bx + c$ kvadrat funktsiya grafigi rasmda tasvirlangan.



Rasmdan foydalanib, $ax^2 + bx + c > 0$ tengsizlik yechimini toping.

- A) $(-\infty; -2) \cup (1; \infty)$ B) $(-2; 1)$ C) $(-\infty; -2)$ D) $(1; \infty)$

8. (Q 4 ball) Tengsizlikni yeching:

$$\frac{x^2 + x - 12}{x + 1} < 0$$

- A) $(-\infty; -4) \cup (-1; 3)$ B) $(-\infty; -3) \cup (-1; 4)$
 C) $(-\infty; -4) \cup (1; 3)$ D) $(-\infty; -4) \cup (-3; 1)$

9. (Q 4 ball) Funktsiyaning aniqlanish sohasini toping:

$$y = \sqrt{x^2 - 36}$$

- A) $[6; \infty)$ B) $[-6; 6]$ C) $(-\infty; -6]$ D) $(-\infty; -6] \cup [6; \infty)$

10. (Q 4 ball) Funksiyaning kamayish oralig'ini toping:

$$y = x^2 - 6x + 8$$

- A) (2; 4) B) (-3; ∞) C) (3; ∞) D) (-∞; 3]

11. (Q 4 ball) Tenglamani yeching:

$$\sqrt{x^2 - 11x - 4} = \sqrt{6 - 2x}$$

- A) 10 B) -1 va 10 C) -1 D) 2

12. (M 5 ball) a ning qanday qiymatlarida $ax^2 + 4x + 9a > 0$ tengsizlik x ning barcha qiymatlarida o'rinli bo'ladi?

- A) $a < \frac{2}{3}$ B) $a > \frac{2}{3}$ C) $a > -\frac{2}{3}$ D) $a < -\frac{2}{3}$

13. (B 4 ball) Katetlari 12 cm va 16 cm bo'lgan to'g'ri burchakli uchburchakning gipotenuzasi uzunligini toping.

- A) 24 cm B) 20 cm C) 18 cm D) 28 cm

14. (B 4 ball) O'xshash uchburchaklar uchun quyidagi tasdiqlarning to'g'ri yoki noto'g'ri ekanligini aniqlang.

No	Tasdiqlar	to'g'ri	noto'g'ri
1	O'xshash uchburchaklarning mos burchaklari o'zaro teng bo'ladi		
2	Ikkita o'xshash uchburchak perimetrlarining nisbati o'xshashlik koeffitsiyentiga teng.		
3	Ikkita o'xshash uchburchak yuzlari nisbati o'xshashlik koeffitsiyentining kvadratiga teng.		

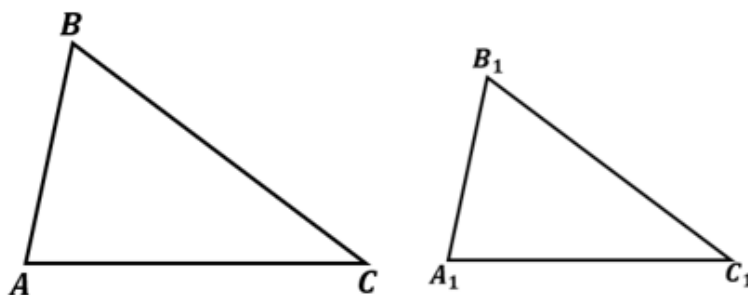
A) to'g'ri, noto'g'ri, to'g'ri; B) noto'g'ri, to'g'ri, to'g'ri;

C) to'g'ri, to'g'ri, to'g'ri; D) to'g'ri, to'g'ri, noto'g'ri;

15. (Q 5,2 ball) Ikkita o'xshash uchburchak yuzlari 55 m^2 va 220 m^2 . Kichik uchburchakning bir tomoni 4 m bo'lsa, katta uchburchakning unga mos tomoni uzunligini toping.

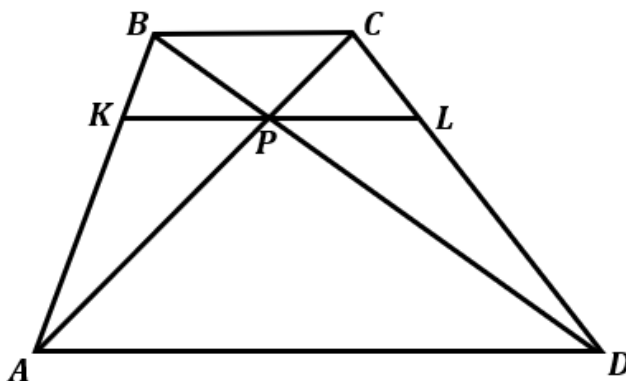
- A) 8 m B) 2 m C) 16 m D) 1 m

16. (Q 5,2 ball) Rasmda ABC va $A_1B_1C_1$ uchburchaklar tasvirlangan. Uchburchaklar o'xshashlik alomatlaridan foydalanib, quyidagi tasdiqlarning to'g'ri yoki noto'g'ri ekanligini aniqlang.



No	Tasdiqlar	to'g'ri	noto'g'ri
1	$\frac{AB}{A_1B_1} = \frac{AC}{A_1C_1}$ va $\angle A = \angle A_1$ bo'lsa, $\Delta ABC \sim \Delta A_1B_1C_1$ bo'ladi		
2	$\angle A = \angle A_1$ va $\angle C = \angle C_1$ bo'lsa, $\Delta ABC \sim \Delta A_1B_1C_1$ bo'ladi		
3	$\frac{AB}{A_1B_1} = \frac{AC}{A_1C_1} = \frac{BC}{B_1C_1}$ bo'lsa, $\Delta ABC \sim \Delta A_1B_1C_1$ bo'ladi		

- A) to'g'ri, to'g'ri, to'g'ri; C) to'g'ri, noto'g'ri, noto'g'ri;
 B) noto'g'ri, noto'g'ri, to'g'ri; D) to'g'ri, to'g'ri, noto'g'ri;
17. (Q 5,2 ball) $ABCD$ parallelogrammning CD tomonida E nuqta olingan. AE va BC nurlar F nuqtada kesishadi. Agar $DE = 3$ cm, $EC = 9$ cm, $BC = 10$ cm, $AE = 8$ cm bo'lsa, ABF uchburchak perimetrini toping.
 A) 64 cm B) 96 cm C) 144 cm D) 84 cm
18. (Q 5,2 ball) $O(2; 8)$ nuqtaga nisbatan simmetriyada $A(3; 5)$ nuqta qaysi nuqtaga o'tadi?
 A) $(-1; 11)$ B) $(1; 11)$ C) $(5; 13)$ D) $(-1; 3)$
19. (Q 5,2 ball) Perimetri 64 cm bo'lgan uchburchakning bir tomoniga parallel qilib o'tkazilgan to'g'ri chiziq undan perimetri 16 cm va yuzi 40 cm² ga teng uchburchak ajratadi. Berilgan uchburchak yuzini toping.
 A) 360 cm² B) 320 cm² C) 640 cm² D) 480 cm²
20. (M 6 ball) Rasmda tasvirlangan trapetsiyada $AD \parallel BC \parallel KL$. Agar $BC = 4$ cm, $AD = 16$ cm bo'lsa, KL kesma uzunligini toping.



- A) 6,4 cm B) 16 cm C) 8,2 cm D) 12,8 cm

21. (B. 2 ball) Complete the definition with personality adjective.

Someone who is always busy or likes doing sports is ...

- A) popular
B) active
C) helpful
D) polite

22. (B. 2 ball) Choose the correct answer.

The water in the ... near our house is really clean.

- A) valley
B) mountain
C) river
D) volcano

23. (B. 2 ball) Choose the correct answer.

I usually go to the town centre because there are no car parks in the centre.

- A) by boat
B) by helicopter
C) by plane
D) on foot

24. (B. 2 ball) Choose the correct answer.

Charles loves and he wants to act in the school play.

- A) Drama
B) ICT
C) Design and technology
D) PE

25. (Q. 2.8 ball) Choose the correct form of the verb:

Sarah _____ in a big company, but she _____ a vacation this week.

- A) work, takes
B) works, is taking
C) is working, takes
D) works, take

26. (Q. 2.8 ball) Choose the correct form of the verb:

Tom and Jerry _____ soccer every afternoon, but they _____ basketball now.

- A) plays, play
B) play, are playing
C) are playing, plays
D) play, playing

27. (Q. 2.8 ball) Choose the correct form of the verb:

She _____ an interesting article in the newspaper yesterday.

- A) reads
B) read
C) reading
D) readed

28. (Q. 2.8 ball) Choose the correct form of the verb:

They _____ very happy when they heard the news.

- A) are
B) is
C) was
D) were

29. (Q. 2.8 ball) Choose the correct preposition to complete the sentence:

I bought this gift _____ my friend.

- A) to
B) by
C) at
D) for

30. (Q. 2.8 ball) Choose the correct preposition to complete the sentence:

The book is _____ the table.

- A) in
B) at
C) on
D) by

31. (Q. 2.8 ball) Choose the correct answer.

Dad always gets home _____ than Mum.

- A) later
B) lately
C) latest
D) the latest

32. (Q. 2.8 ball) Choose the correct answer

You need to study _____ to pass your exams.

- A) harder
B) hardly
C) hardest
D) the hardest

33. (Q. 2.8 ball) Choose the correct form of the verb:

They _____ TV when the lights _____ out.

- A) watched, went
B) were watching, were going
C) were watching, went
D) watched, was going

34. (Q. 2.8 ball) Choose the correct form of the verb:

She _____ on the phone when I _____ her.

- A) talked, saw
B) was talking, saw
C) talked, was seeing
D) was talking, was seeing

35. (M. 4 ball) Read the text and choose the INCORRECT statement.

DAILY STORIES

by Margarita Marcos

Today I'm writing this blog about my oldest sister, Sofia. She's six years older than me. It's her birthday today and she's 21. She doesn't live in the same house as my parents and me, but her flat is in the same street. We live at number 22 Spring Street, and she lives in one of six flats at number 28.

Sofia is the first person I go to when I have a problem, and she always tries to help. She also helps me with my English homework. We all speak Spanish at home, but Sofia speaks English really well too as a second language. She knows some English from school, but she also listens to English music and watches English films. Another thing she is great at is dancing. She's teaching me the tango this week. Tango is really difficult, but I love the music and the dance.

My sister's interested in everything. She loves learning about science on the internet, and she often reads books about history in her free time. She also does three sports: football, swimming and running. She enjoys them all and is good at swimming. She likes camping, and she's learning to play the piano at the moment, too. She can't play very well yet, but she practises every day. She's also planning to learn the violin. She's a very active person! I really don't know how she has time to do so many things!

- A) Sofia's flat is on the same street as Margarita's house.
B) Sofia speaks English well as a second language.
C) Sofia loves learning about science and often reads history books.
D) Sofia is learning to play the violin at the moment.

36. (B 2 ball) Molekular-kinetik nazariyaning asosiy qoidalari qaysi javobda nisbatan to'liq bayon qilingan?

- A) modda mayda zarralardan tashkil topgan va ular orasida o'zaro ta'sir kuchlari mavjud
B) har qanday jism molekulalardan tuzilgan, ular betartib harakatda bo'ladi, ular orasida o'zaro ta'sir kuchlari mavjud
C) modda mayda bo'laklardan tuziladi va ular fazoni uzluksiz to'ldiradi
D) modda elektron, betartib harakatdagi proton va neytronlardan tuzilgan, ular orasida o'zaro ta'sir kuchlari mavjud

37. (Q 2,8 ball) Bitta oltin atomining massasi $3,29 \cdot 10^{-25}$ kg. Uning nisbiy atom massasini toping (m.a.b). $1 \text{ m.a.b} = 1,67 \cdot 10^{-27}$ kg.

A) 108

C) 320

B) 197

D) 290

38. (Q 2,8 ball) 200 g geliy moddasining miqdorini aniqlang (mol). $\mu = 4$ g/mol.

A) 100

C) 20

B) 25

D) 50

39. (B 2 ball) Molekular-kinetik nazariyaning asosiy tenglamasini toping.

A) $pV = const$

C) $\frac{pV}{T} = const$

B) $pV = \nu RT$

D) $p = \frac{2}{3} nE_k$

40. (B 2 ball) Quyida A ustunda berilgan haroratlarga B ustundan mos keluvchi haroratlarni to'g'ri moslab chiqing.

A (kelvin)	B (selsiy)
1) 290 K	a) 47°C
2) 250 K	b) -23°C
3) 320 K	c) 17°C
	d) 27°C

A) 1-c; 2-a; 3-b

C) 1-c; 2-b; 3-a

B) 1-d; 2-c; 3-a

D) 1-c; 2-d; 3-b

41. (Q 2,8 ball) Molekulalari ilgarilanma harakatining o'rtacha kinetik energiyasi $8,28 \cdot 10^{-21}$ J bo'lgan gazning temperaturasi qanday ($^\circ\text{C}$). $k = 1,38 \cdot 10^{-23}$ J/K.

A) 127

C) 137

B) 117

D) 130

42. (Q 2,8 ball) Mendeleyev-Klapeyron tenglamasidan ideal gazning zichligi qanday hisoblanadi?

A) $\rho = \frac{pM}{RT}$

C) $\rho = \frac{p}{RT}$

B) $\rho = \frac{RT}{p}$

D) $\rho = \frac{p}{RTM}$

43. (Q 2,8 ball) Hajmi 100 litr bo'lgan idishda 250 g metan 4,155 atm bosim hosil qiladi. Uning temperaturasini toping ($^\circ\text{C}$). $\mu = 16$ g/mol.

A) 35

C) 47

B) 68

D) 74

44. (Q 2,8 ball) Gazning hajmi 6 l dan 4 l gacha izotermik ravishda kamaytirildi. Gazning boshlang'ich bosimi 10 kPa bo'lsa, siqilish natijasida bosim necha kPa ortgan?

A) 15

C) 20

B) 5

D) 10

45. (Q 2,8 ball) Izobarik jarayonda gazning boshlang'ich hajmi 120 l va temperaturasi 450 K. Gaz isishi natijasida 150 l hajmni egallagan bo'lsa, uning oxirgi temperaturasini toping (K).

A) 325,5

B) 424,5

C) 622,5

D) 562,5

46. (Q 2,8 ball) Ballondagi gazning bosimi 4 kPa va temperaturasi 300 K. Agar uni isitib temperaturasini 450 K ga yetkazsak, ballonda qanday bosim qaror topadi (kPa).

A) 8

C) 6

B) 5

D) 10

47. (B 2 ball) 1 mol bir atomli ideal gaz molekularining o'rtacha kinetik energiyalari yig'indisi qaysi javobda to'g'ri ko'rsatilgan?

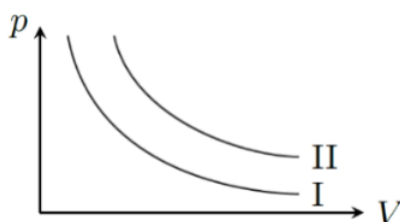
A) $E_k = 3RT/2$

C) $E_k = 3kT/2$

B) $E_k = 3kT$

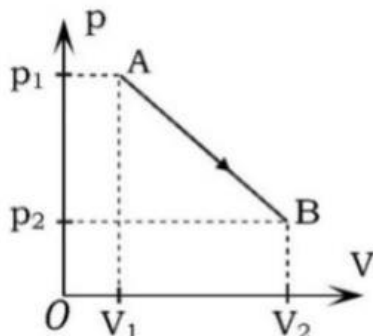
D) $E_k = 3RT$

48. (M 4 ball) Ideal gaz ustida ikki xil izotermik jarayon bajarildi. Birinchi holda gazning ichki energiyasi 111 kJ ga teng, ikkinchi holda esa birinchisidan 37 kJ ga farq qilgan. Agar ikkala jarayondagi temperaturalar 125 K ga farq qilgan bo'lsa, birinchi holatdagi temperaturani (K) aniqlang.



A) 227 B) 500 C) 375 D) 250

49. (Q 2,8 ball) Rasmda tasvirlangan jarayonda ideal gazning bajarigan ishini toping.



A) $p_2V_2 - p_1V_1$

C) $(p_2 - p_1)(V_2 + V_1)/2$

B) $(p_2 + p_1)(V_2 - V_1)/2$

D) $p_2V_1 - p_1V_2$

50. (Q 2,8 ball) Silindrdagi gazning o'rtacha bosimi 1 MN/m². Porshenning yuzi 200 cm², yurish uzunligi 0,5 m. Porshenning bir marta yurishida gaz qanday ish bajaradi (kJ)?

A) 20

C) 4

B) 12

D) 10



PEDAGOGIK MAHORAT VA XALQARO
BAHOLASH ILMIY-AMALIY
MARKAZI